

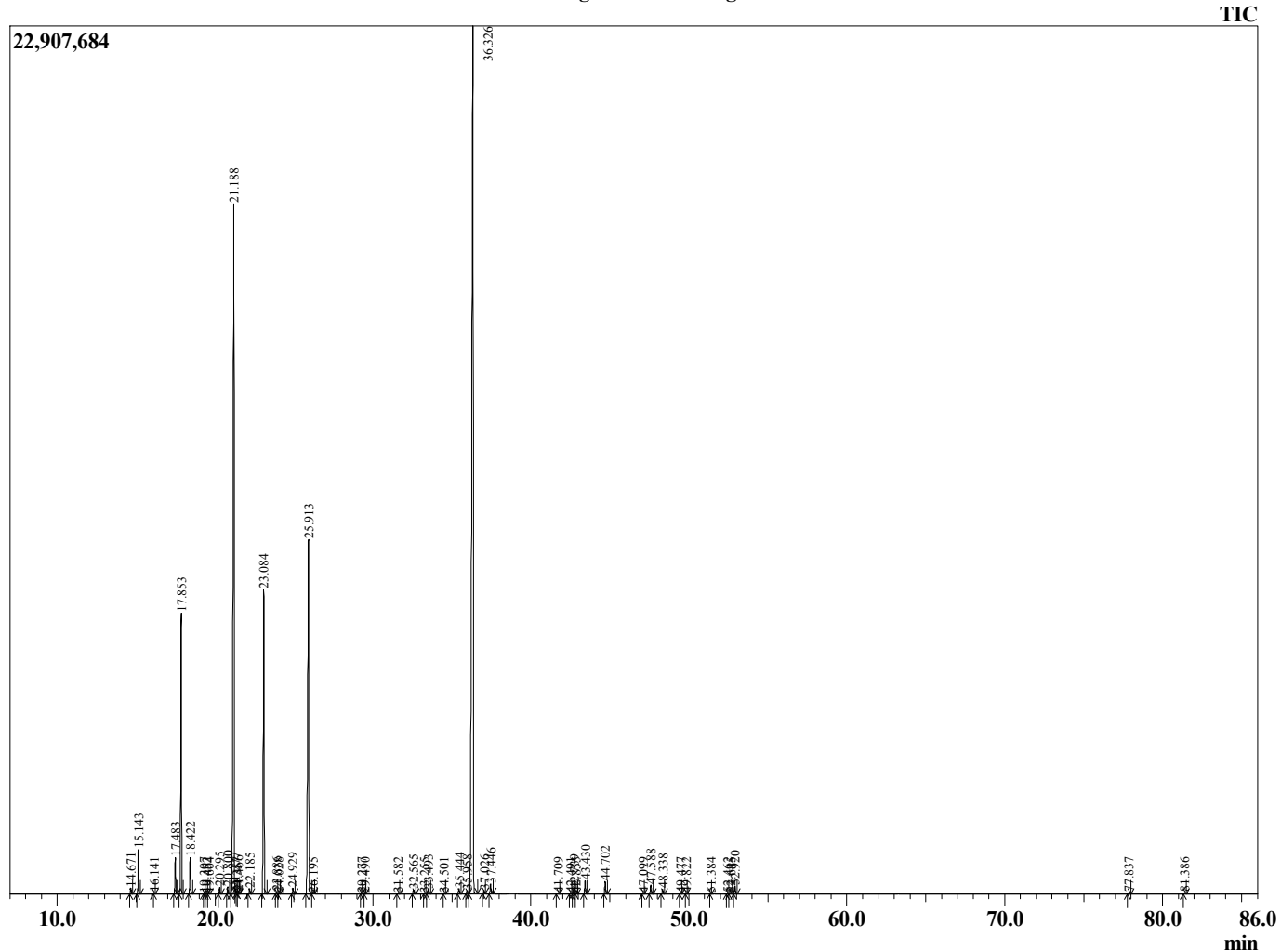
Sample Information

Analyzed : 7/26/2019 1:19:37 PM
 Sample Type : Essential Oil
 Sample Name : Citrus bergamia
 Injection Volume : 0.10

Bergamot
 Lot# ITZ16-ZW
 Country: Italy



Chromatogram Citrus bergamia



Peak	R.Time	Name	Area%
1	14.671	alpha-Thujene	0.13
2	15.143	alpha-Pinene	1.02
3	16.141	Camphene	0.02
4	17.483	Sabinene	0.90
5	17.853	beta-Pinene	7.23
6	18.422	Myrcene	0.90
7	19.307	Octanal	0.01
8	19.452	Pseudolimonene	0.02
9	19.604	alpha-Phellandrene	0.02
10	20.295	alpha-Terpinene	0.17
11	20.800	para-Cymene	0.20
12	21.188	Limonene	23.92
13	21.277	beta-Phellandrene	0.02
14	21.357	1,8-Cineole	0.01
15	21.466	cis-beta-Ocimene	0.04
16	22.185	trans-beta-Ocimene	0.15
17	23.084	gamma-Terpinene	8.83
18	23.886	cis-Linalool oxide (furanoid)	0.05
19	24.028	Pinol	0.01
20	24.929	Terpinolene	0.19
21	25.913	Linalool	12.79
22	26.195	Nonanal	0.02
23	29.277	Camphor	0.01
24	29.490	Citronellal	0.01
25	31.582	Terpinen-4-ol	0.02
26	32.565	alpha-Terpineol	0.12
27	33.255	Decanal	0.01
28	33.493	Octyl acetate	0.12
29	34.501	Nerol	0.02
30	35.444	Neral	0.17
31	35.958	Unidentified	0.11
32	36.326	Linalyl acetate	40.62
33	37.026	Unidentified	0.10
34	37.446	Geranial	0.30
35	41.709	Unidentified	0.02
36	42.491	Unidentified	0.02
37	42.739	alpha-Terpinyl acetate	0.14
38	42.855	gamma-Terpinyl acetate	0.01
39	43.430	Neryl acetate	0.38
40	44.702	Geranyl acetate	0.38
41	47.099	cis-alpha-Bergamotene	0.01
42	47.588	beta-Caryophyllene	0.27
43	48.338	trans-alpha-Bergamotene	0.15
44	49.477	trans-beta-Farnesene	0.01
45	49.822	alpha-Humulene	0.01
46	51.384	Germacrene D	0.01
47	52.462	cis-alpha-Bisabolene	0.02
48	52.645	(E,E)-alpha-Farnesene	0.01
49	52.920	beta-Bisabolene	0.24
50	77.837	Citropten	0.05
51	81.386	Isobergaptene	0.04
52			100.00